



WinAutomation installation instructions for FmPro Migrator on Windows

Step 1 - Install WinAutomation software

Install WinAutomation downloaded from the www.winautomation.com website.

You may click on the 30-day trial license key button, if you are not ready to purchase WinAutomation at this time. The 30-day trial version works fine with FmPro Migrator.

Open the WinAutomation console, select Tools -> Start WinAutomation Service. This service needs to be running in order for WinAutomation to respond to triggers which start each Job.

Step 2 - Install WinAutomation Jobs

Import the jobs within the file: FmPro Migrator WinAutomation Jobs.zip

This zip file contains the WinAutomation jobs which are invoked by FmPro Migrator via file triggering. Unzip this file, then import each of the .xml files which have been extracted from the zip archive. Each job needs to be imported individually:

Within the WinAutomation Console application, select the menu “File -> Import Job” for each .xml job file.

Step 3 - Verify Creation of WinAutomation_Triggers Folder

WinAutomation jobs are triggered by the creation of individual files within the C:\WinAutoMation_Triggers folder.

FmPro Migrator creates temporary files within the Triggers folder at top level of the C: drive. WinAutomation looks for the addition of files to this folder, and then executes the appropriate job when specific individual files are created. These shortcuts perform a variety of tasks including creating and setting the color of each Table Occurrence and creating each Relationship on the Relationship Graph.

This folder should have been created automatically when the “Download WinAutoMation” button was clicked within FmPro Migrator. If this folder was not created automatically, then create it manually.

Step 4 - Prepare FileMaker...

WinAutomation is dependent upon some FileMaker configuration settings when it attempts to click and set buttons and fields in an automated manner.

- Re-size the FileMaker Relationships window to its smallest size. The size of this window determines the location of the Color Palette button shown in Figure #1. This button does not work like regular buttons which can be located by the name of the button, therefore it is located strictly by its Horizontal and Vertical coordinates within the Relationships window.
- The WinAutomation jobs are also dependent upon the English version of FileMaker running on Windows configured for use in English. Please see the section of this document titled Localization for information about localizing the WinAutomation jobs for different languages.

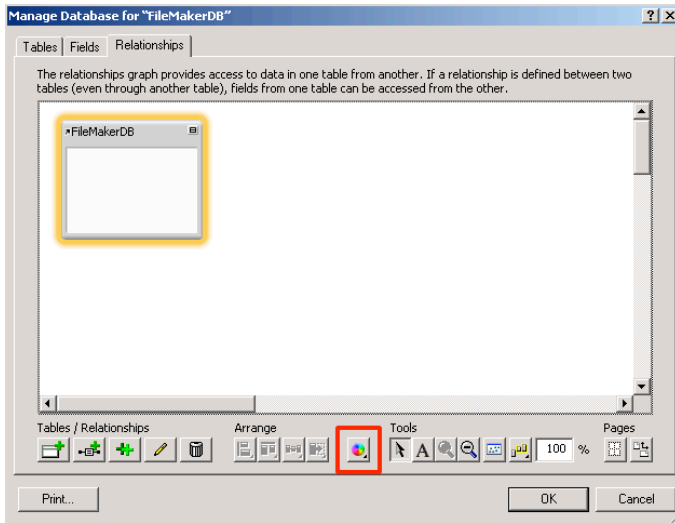


Figure #1
Color Palette Button – FileMaker Relationships Window

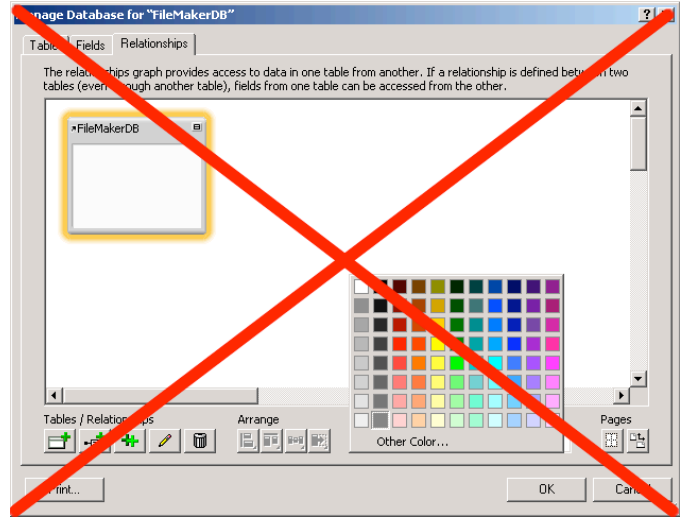


Figure #2
Color Selection Palette – Positioned Too High

Make sure that the Define/Manage database window is far enough above the Windows Taskbar so that the Color drop down palette can be displayed below the Color Palette button shown in Figure #1. If the Define/Manage database window is too close to the Taskbar, then the color selector will appear above the Color Palette button, as shown in Figure #2. This is the wrong location for the color selector drop down menu, as the WinAutomation jobs expect the Other Color.. text to be located at a specific pixel location. The correct location for the color selector drop down menu is shown in Figure #3.

- Re-size the Specify Table window to its smallest size. The WinAutomation jobs depend upon the TO name field being located at a specific vertical coordinate from the top of the Specify Table window, so that this field can be selected by clicking within the field prior to typing the name of the Table Occurrence.

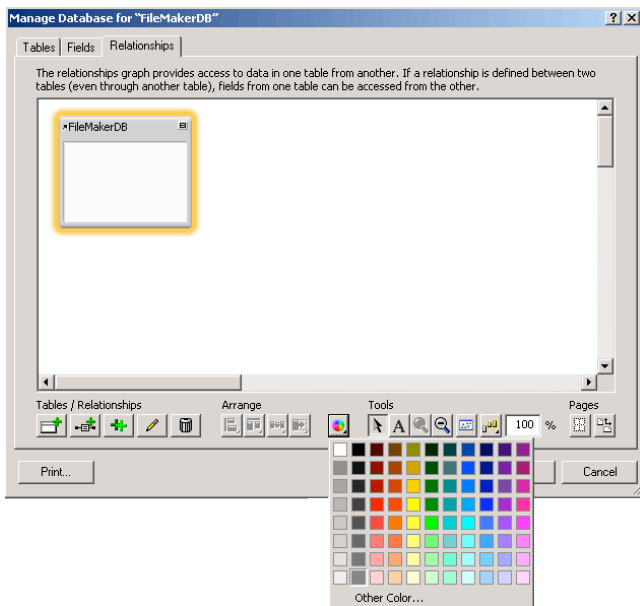


Figure #3
Color Selection Palette – Positioned Correctly

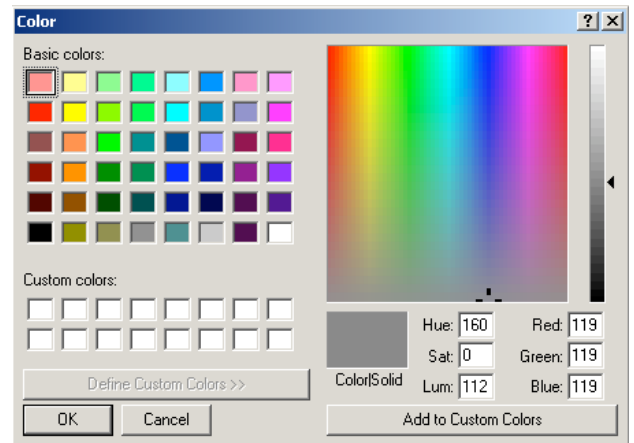


Figure #4
Color Palette Window

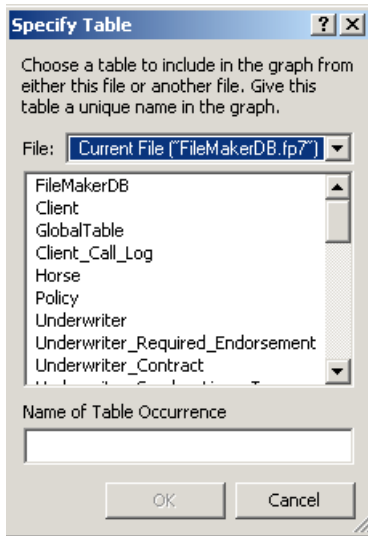


Figure #5
Specify Table Window – Set to
Smallest Vertical Size

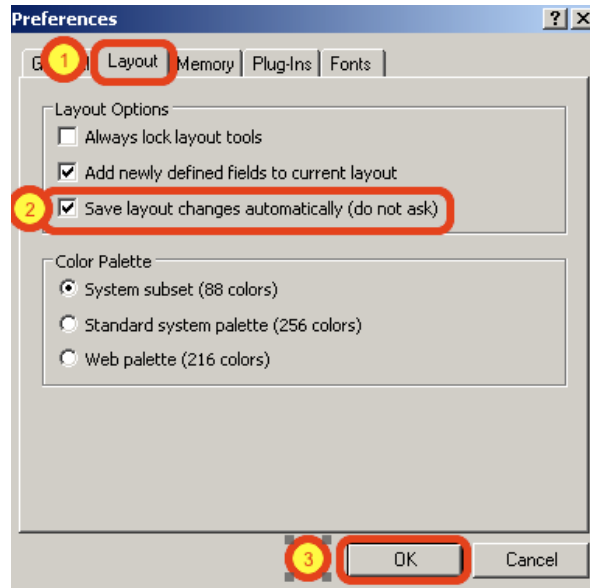


Figure #6
Save Layout Changes Automatically

- As shown in Figure #6, select the FileMaker Preferences menu item, (1) click the Layouts tab, (2) click the checkbox to enable the "Save layout changes automatically (do not ask)" option, then (3) click the OK button.

General Troubleshooting

The WinAutomation jobs driving the FileMaker graphical interface, require some consistency in the graphical configuration of the FileMaker windows, and the current state of the application.

- Make sure that there are no dialog boxes open in FileMaker (i.e. Open Database, Import Records, Export Records etc.) prior to clicking the batch processing buttons within FmPro Migrator.
- Avoid having the Define/Manage Database window open within FileMaker. FmPro Migrator uses a WinAutomation job to open/close/save changes to the Relationships window automatically, therefore FmPro Migrator expects this window to be closed when it starts a batch processing operation. The exception to this guideline is that the Relationship Graph window needs to be opened prior to clicking on the Current TO/Current Relationship button.
- The Base Tables must already exist within the FileMaker database prior to creating Table Occurrences or Relationships. Pasting the Base Table definitions from the Tables screen within FmPro Migrator is the best way to create these tables within FileMaker Advanced. Following the execution order of the buttons on the Table Consolidation window will insure that the proper objects are in place at the proper point in time during the migration process.
- Clicking the Create All TOs or Create All Relationships buttons while holding down the Shift key will make the batch processing buttons visible. Individual TOs/Relationships can be created by clicking on the TO/Relationship in the list and then clicking the Current TO/Current Relationship button. The Relationship Graph window must be open prior to clicking the Current button.

- The sample database FileMakerDB.fp7 is written to the output directory by FmPro Migrator. This database file is recommended for use as the destination database when performing Table Consolidation projects. This file contains a TO named “= Placeholder TO” which is used by the WinAutomation jobs when building relationships. The jobs press the “=” key prior to selecting each TO from the list, in order to insure that the proper TO gets selected by typing its name. There should not be more than one TO with a name starting with “=” within the TO list or the wrong TO may get selected.
- Before creating TOs in batch processing mode, it may be necessary to open the Relationship Graph and click on the Create Table Occurrence button. Then click the Cancel button to the Specify Table dialog and click the Cancel button for the Relationship Graph window. Sometimes, it is necessary to perform these steps once, prior to starting a batch session with FileMaker 8/8.5 in order to get FileMaker to recognize the Cntrl + Shift + T key combination sent from the WinAutomation job to create the Table Occurrence.

Localization

Because WinAutomation jobs are being used to drive the FileMaker graphical interface, these jobs can be customized for the language being used.

Each WinAutomation job supplied with FmPro Migrator uses keystrokes and menu selections for the English version of FileMaker Pro Advanced (versions 8, 8.5 and 9). If desired, the user may customize the supplied jobs for their native language.

Note: This localization feature only extends to the contents of the WinAutomation jobs. The FmPro Migrator interface and the names of each WinAutomation job called by FmPro Migrator must remain in English.

In order to localize the WinAutomation jobs, open each job and look for send keystroke, menu selection, window and button tasks performed by the script. WinAutomation uses the name of the application window to locate, wait for the existence of buttons and click on buttons within the FileMaker graphical interface. There are also keystrokes sent to open the Table Occurrence and Relationship creation windows.

Localization Troubleshooting

While modifying the WinAutomation jobs, it can be helpful to run the scripts individually, without using FmPro Migrator to drive WinAutomation in batch mode.

Each WinAutomation job receives information from FmPro Migrator via lists of return separated values placed on the Clipboard. In order to simulate the operation of the job via FmPro Migrator, use the following tables of values to put data onto the clipboard when testing each type of job.

Table Occurrence Shortcuts (Clipboard Contents)	
Table Occurrence Name	Name of the Table Occurrence which will be created.
Base Table Name	Name of TO base table.
Red Color	Decimal value for red color of TO.
Green Color	Decimal value for green color of TO.
Blue Color	Decimal value for blue color of TO.

Relationships Shortcuts (Clipboard Contents)	
Relationship Processing Type	Add - Add Predicate to Existing Relationship New - Create New Relationship with Predicate
Left Table Name - Char#1	First character for Name of the TO on the left side of the relationship.
Position Down List	Number of times to press down arrow key, to get to actual Left Table Name entry in list, starting with first item having a name starting with the first character of the TO.
Left Table Cascade Create	Cascade Create Status (1/0)
Left Table Cascade Delete	Cascade Delete Status (1/0)
Right Table Name	First character for Name of the TO on the right side of the relationship.
Position Down List	Number of times to press down arrow key, to get to actual Right Table Name entry in list, starting with first item having a name starting with the first character of the TO.
Right Table Cascade Create	Cascade Create Status (1/0)
Right Table Cascade Delete	Cascade Delete Status (1/0)

Relationships Shortcuts (Clipboard Contents)

Left Field Name	Name of field on the left side of the relationship predicate.
Join Type	Type of join (=, <, >, <>, <=, >=, x)
Right Field Name	Name of field on the right side of the relationship predicate.